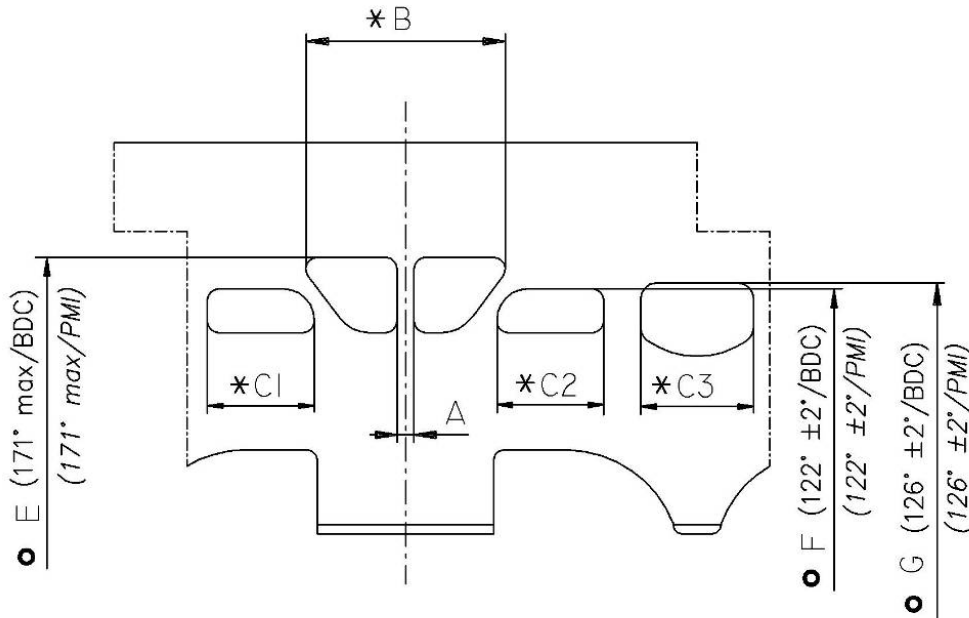




DRAWING OF THE CYLINDER DEVELOPMENT

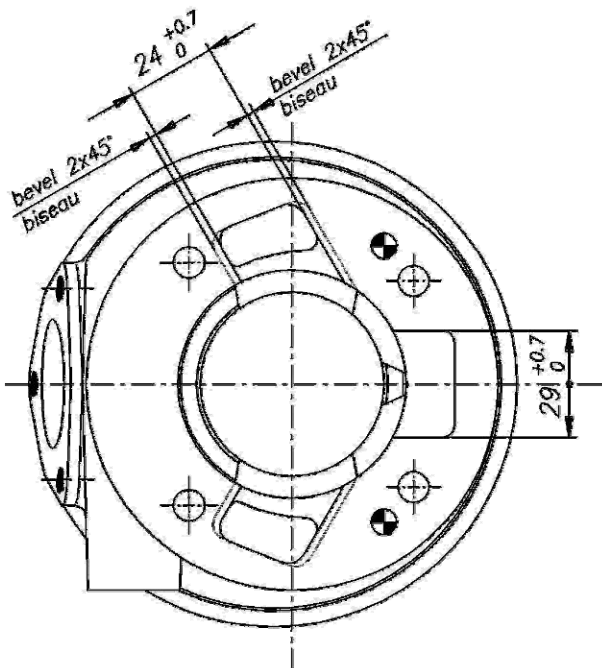


A	≥ 4 mm
B	≤ 50.2 mm
C1 = C2	≤ 25.5 mm
C3	≤ 28.3 mm
E	171° max
F	122° ± 2°
G	126° ± 2°

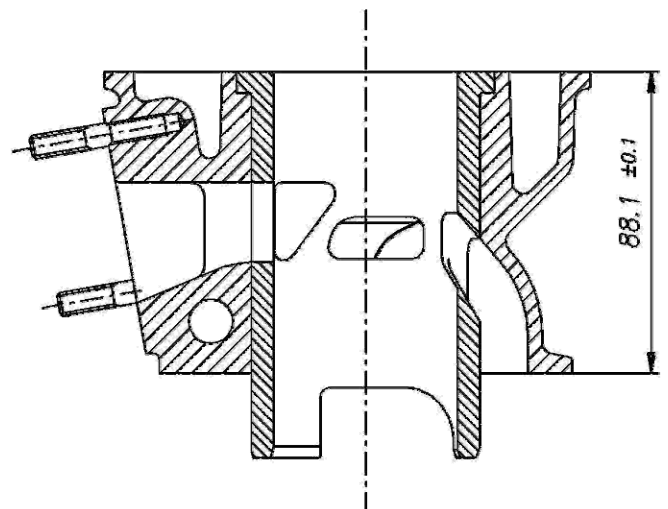
* CHORDAL READING
LECTURE CORDALE

○ ANGULAR READING BY INSERTING A 0.2 mm GAUGE
LECTURE ANGULAIRE PAR INSERTION D'UNE CALE DE 0.2 mm

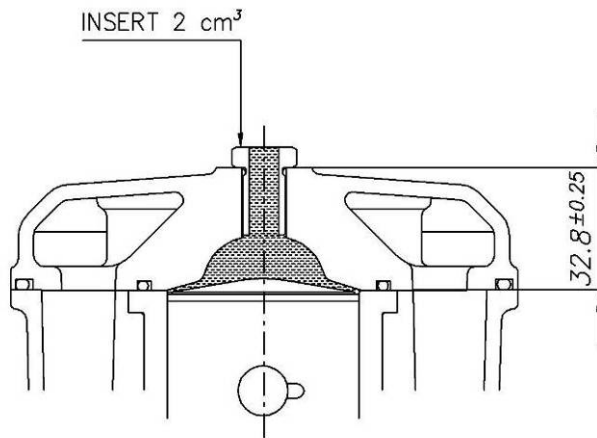
DRAWING OF THE CYLINDER BASE



CYLINDER SECTION VIEW

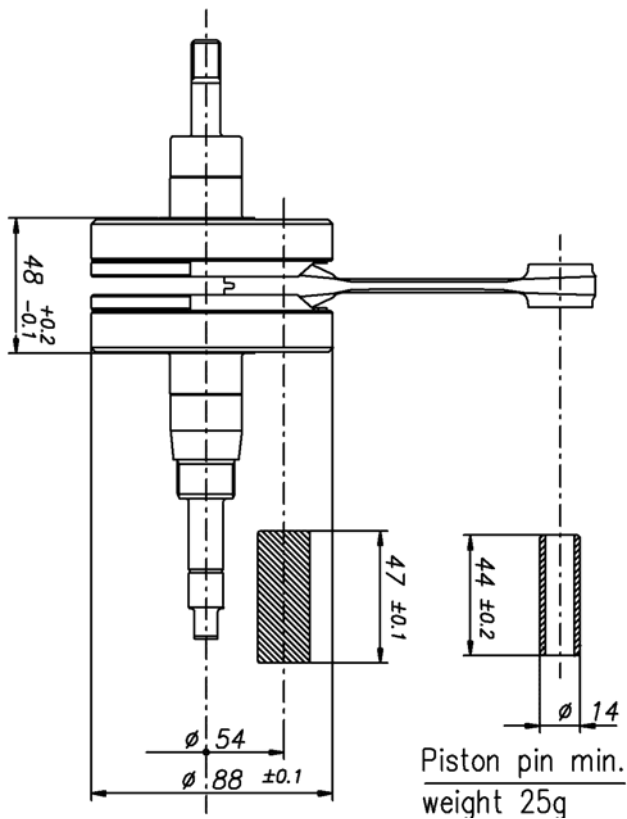


DRAWING OF THE CYLINDER HEAD AND THE COMBUSTION CHAMBER

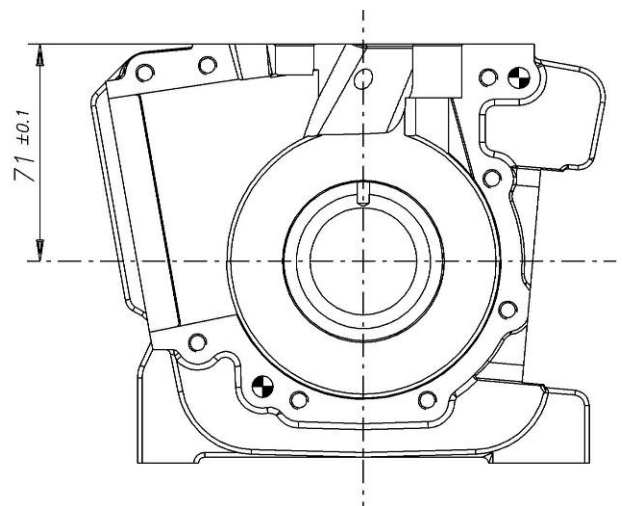


COMBUSTION CHAMBER VOLUME = 9.5 cm³ min.
 VOLUME CHAMBRE COMBUSTION = 9.5 cm³ min.



DRAWING OF THE CRANKSHAFT



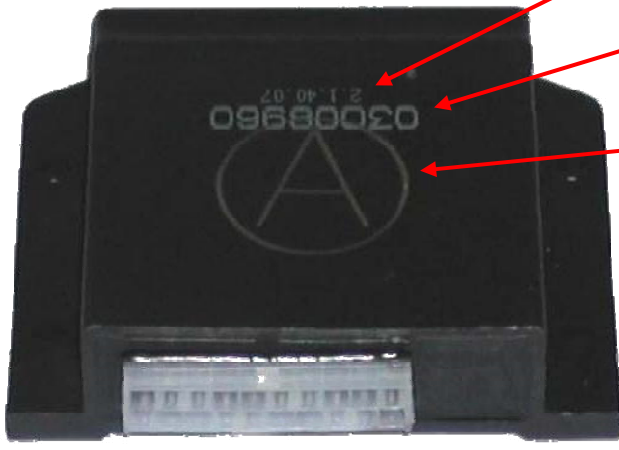
DRAWING OF THE INSIDE OF SUMP



IGNITION	
Manufacturer	SELETTRA
Model Number	
Rotation	COUNTERCLOCKWISE
Description	- DIGITAL « K »

PHOTO OF IGNITION	PHOTO OF COIL
	

ELECTRONIC BOX MARKING (SELETTRA DIGITAL “K” IGNITION)



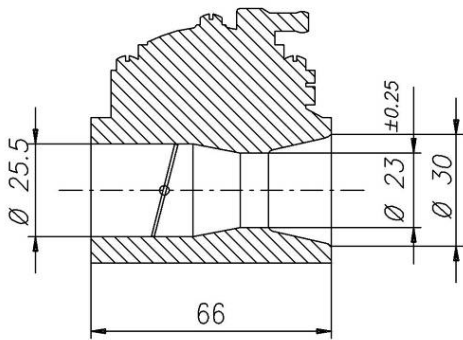
PRODUCTION DATE
DATE DE FABRICATION

SUPPLIER PART NUMBER
N° REF. FOURNISSEUR

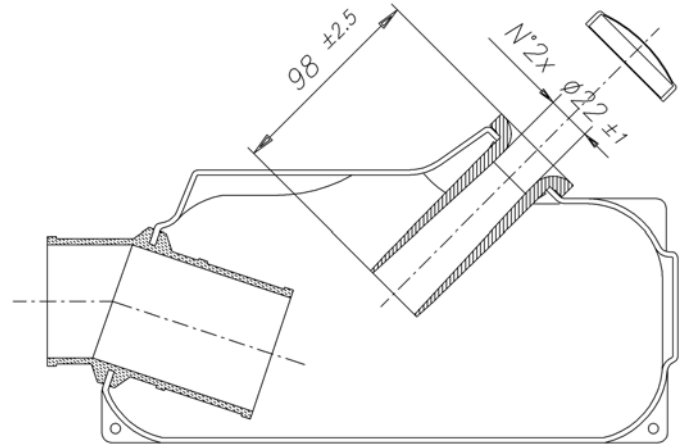
IAME MARKING
MARQUAGE IAME

CARBURETOR DIMENSION

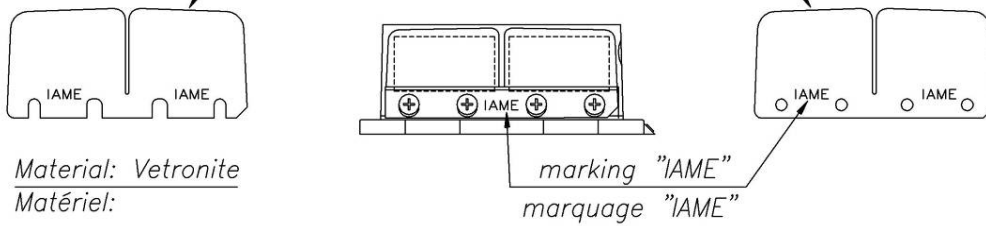
TILLOTSON mod. HL-334 AB



INLET SILENCER

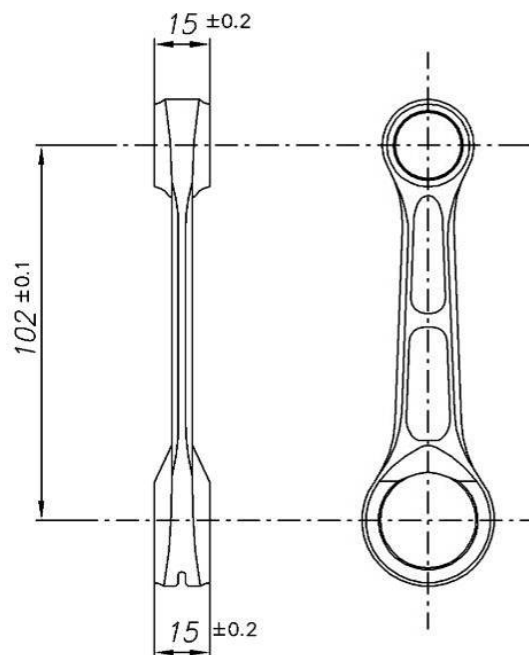
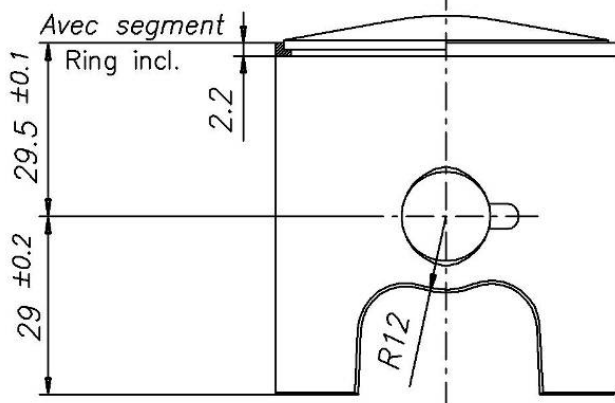


Reed petals min. thicknesses = 0.30 mm
 Min. épaisseur clapets = 0.30 mm



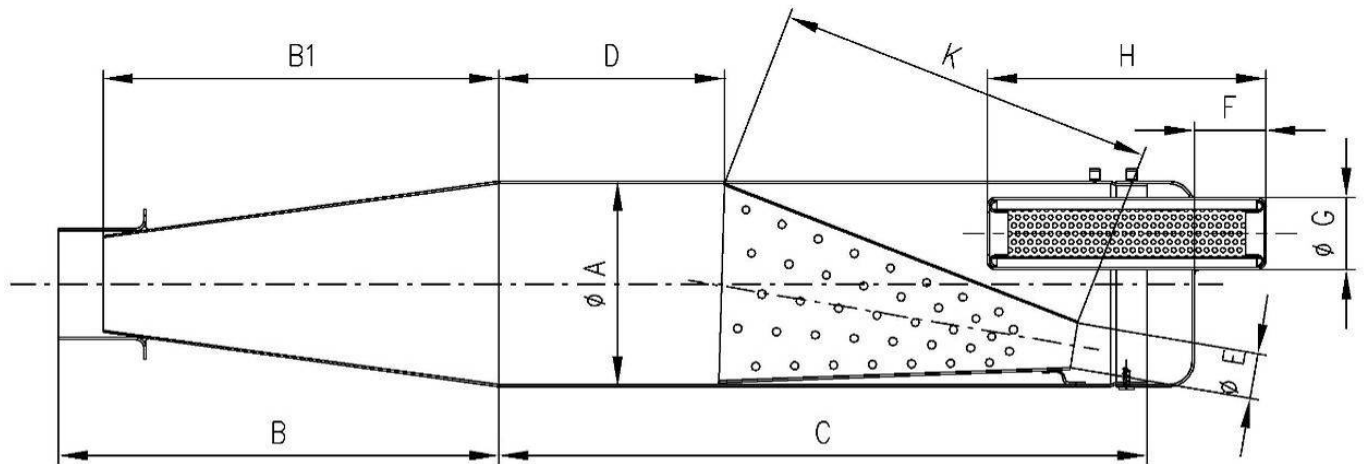
PISTON

CONNECTING ROD



Min. weight= 109 g

DRAWING OF THE SILENCER AND IT'S COMPONENTS



The end parts of the silencer must have two soldered pairs of lugs (one pair at the top and one pair at the bottom) to allow for fixing of seals by the Organizer so that the silencer may be opened during the competition

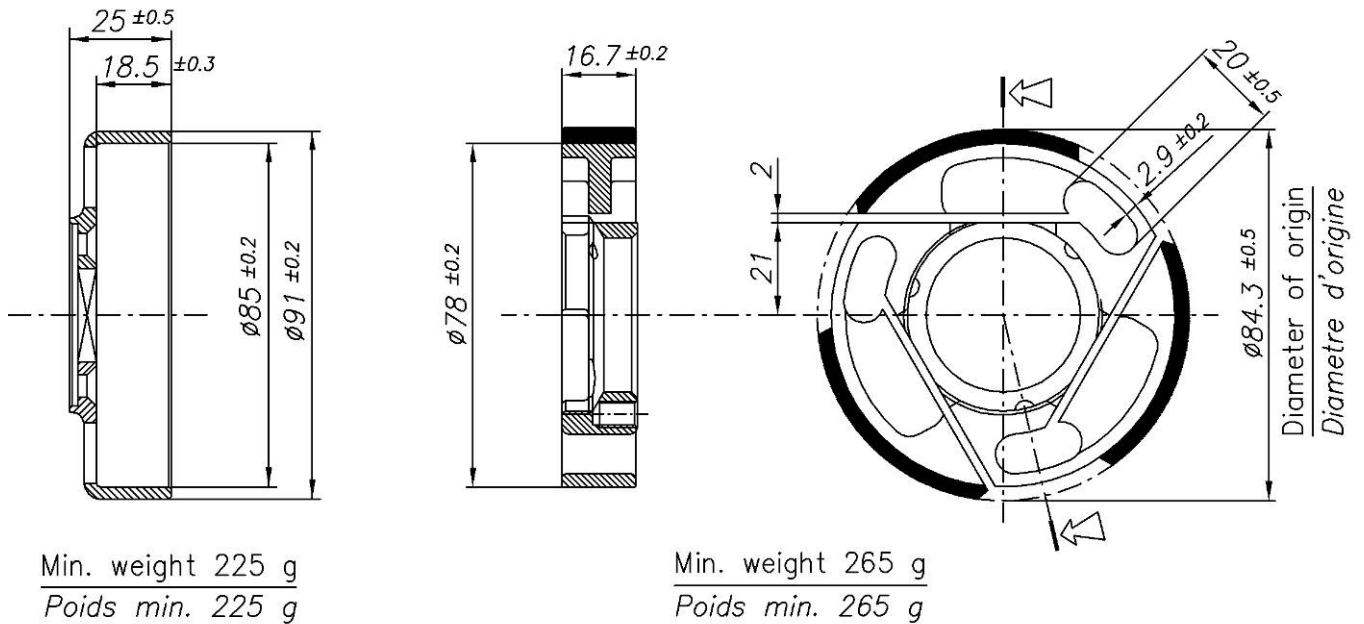
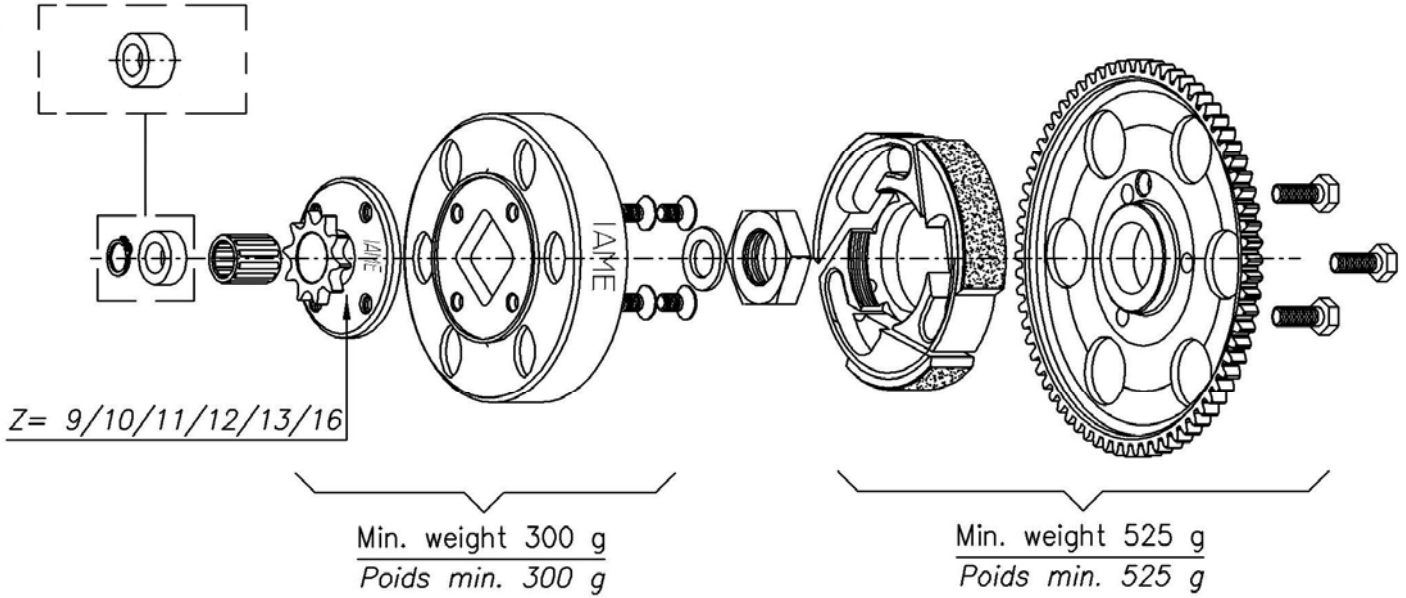
Measurements:

<u>A: 100 Øext.</u>	<u>E: 24</u>
<u>B: 215</u>	<u>F: 36</u>
<u>B1: 193</u>	<u>G: 35</u>
<u>C: 315</u>	<u>H: 134</u>
<u>D: 110</u>	<u>K: 185</u>

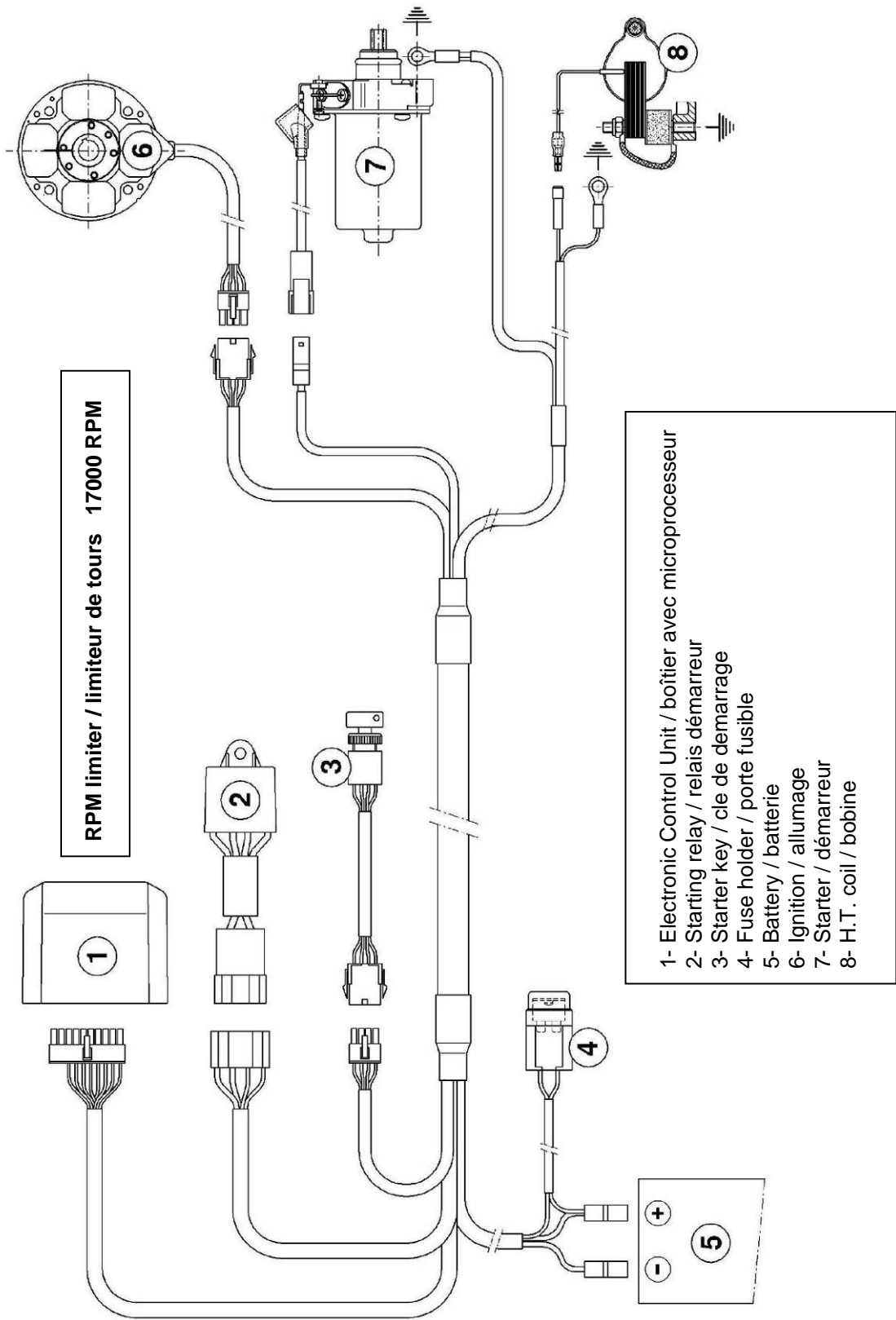
TOLERANCES
 Rough dimensions
 up to 25mm → ±1mm
 from to 25÷60mm → ±1,5mm
 more than 60mm → ±3mm

DRAWING OF THE CLUTCH

*BE USED AS
AN ALTERNATIVE*



SELETTRA DIGITAL "K" IGNITION WIRING DIAGRAM



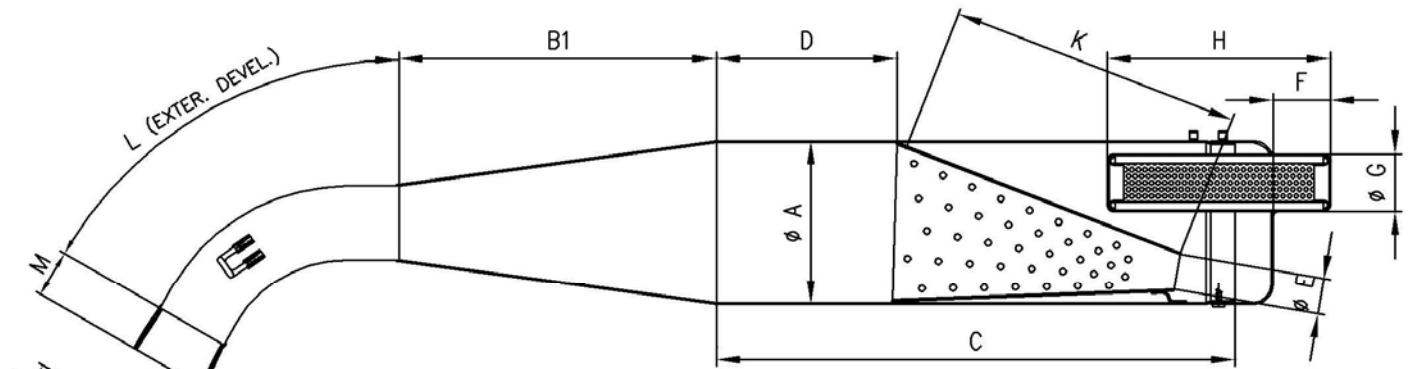
RPM limiter / limiteur de tours 17000 RPM

- 1- Electronic Control Unit / boîtier avec microprocesseur
- 2- Starting relay / relais démarrage
- 3- Starter key / cle de démarrage
- 4- Fuse holder / porte fusible
- 5- Battery / batterie
- 6- Ignition / allumage
- 7- Starter / démarreur
- 8- H.T. coil / bobine

PHOTO IDENTIFICATION EXHAUST MUFFLER WITH FITTING



EXHAUST MUFFLER WITH FITTING VIEW AND DIMENSIONS



A: <u>100</u>	D: <u>110</u>	G: <u>35</u>	L: <u>175</u>
B1: <u>193</u>	E: <u>24</u>	H: <u>134</u>	M: <u>29</u>
C: <u>315</u>	F: <u>36</u>	K: <u>185</u>	N: <u>33</u>